

S.P. NO. H.008732 (700-17-0212)

F.A.P. NO. H008732

BATON ROUGE LOOP

Ascension, East Baton Rouge, Iberville, Livingston,
and West Baton Rouge Parishes, Louisiana

**Tier 1 Final Environmental Impact Statement
Section 4(f) / Section 6(f) Evaluation**

Volume 3 of 3

U.S. Department of Transportation Federal Highway Administration,
Louisiana Department of Transportation and Development, and
Capital Area Expressway Authority

Cooperating Agencies:

U.S. Army Corps of Engineers, New Orleans District
U.S. Coast Guard, 8th Coast Guard District

Legacy Numbers:

S.P. No. H.005201 (700-96-0011)

F.A.P. No. STP-9609(504)

DECEMBER 2015





S.P. No. H.008732 (700-17-0212)
F.A.P. No. H008732

Baton Rouge Loop

**Ascension, East Baton Rouge,
Iberville, Livingston, and
West Baton Rouge Parishes, Louisiana**

Tier 1 Final Environmental Impact Statement Section 4(f) / Section 6(f) Evaluation

Submitted pursuant to: 42 U.S.C. 4332 (2) (c) and 49 U.S.C. 303

By the
**U.S. Department of Transportation Federal Highway Administration,
Louisiana Department of Transportation and Development, and
Capital Area Expressway Authority
and
Cooperating Agencies:
U.S. Army Corps of Engineers, New Orleans District,
U.S. Coast Guard, 8th Coast Guard District**

**Volume 3 of 3
EXHIBITS**



Volume 3: Exhibits Index

CHAPTER 2 EXHIBITS

- 2-1 North Unit with Corridor Sections
- 2-2 South Unit with Corridor Sections
- 2-3 East Unit with Corridor Sections
- 2-4 Future Traffic Volumes
- 2-5 Future Interstate Traffic Volumes

CHAPTER 3 EXHIBITS

- 3-1 Land Cover in Project Area
- 3-2 Alternative NA and NE Land Cover
- 3-3 Alternative NB and ND Land Cover
- 3-4 Alternative NC Land Cover
- 3-5 Alternative SA and SL Land Cover
- 3-6 Alternative SB and SK Land Cover
- 3-7 Alternative SC and SJ Land Cover
- 3-8 Alternative SD and SI Land Cover
- 3-9 Alternative SE and SH Land Cover
- 3-10 Alternative SF and SG Land Cover
- 3-11 Alternative SM and SQ Land Cover
- 3-12 Alternative SN and SP Land Cover
- 3-13 Alternative SO and SR Land Cover
- 3-14 Alternative EA and EH Land Cover
- 3-15 Alternative EB and EG Land Cover
- 3-16 Alternative EC and EF Land Cover
- 3-17 Alternative ED and EE Land Cover
- 3-18 Prime Farmland Soils in Project Area
- 3-19 Alternative NA and NE Prime Farmland Soils
- 3-20 Alternative NB and ND Prime Farmland Soils
- 3-21 Alternative NC Prime Farmland Soils
- 3-22 Alternative SA and SL Prime Farmland Soils
- 3-23 Alternative SB and SK Prime Farmland Soils
- 3-24 Alternative SC and SJ Prime Farmland Soils
- 3-25 Alternative SD and SI Prime Farmland Soils
- 3-26 Alternative SE and SH Prime Farmland Soils
- 3-27 Alternative SF and SG Prime Farmland Soils
- 3-28 Alternative SM and SQ Prime Farmland Soils
- 3-29 Alternative SN and SP Prime Farmland Soils
- 3-30 Alternative SO and SR Prime Farmland Soils
- 3-31 Alternative EA and EH Prime Farmland Soils
- 3-32 Alternative EB and EG Prime Farmland Soils
- 3-33 Alternative EC and EF Prime Farmland Soils
- 3-34 Alternative ED and EE Prime Farmland Soils

- 3-35 Parks and Community Facilities in Project Area
- 3-36 Alternative NA and NE Parks and Community Facilities
- 3-37 Alternative NB and ND Parks and Community Facilities
- 3-38 Alternative NC Parks and Community Facilities
- 3-39 Alternative SA and SL Parks and Community Facilities
- 3-40 Alternative SB and SK Parks and Community Facilities
- 3-41 Alternative SC and SJ Parks and Community Facilities
- 3-42 Alternative SD and SI Parks and Community Facilities
- 3-43 Alternative SE and SH Parks and Community Facilities
- 3-44 Alternative SF and SG Parks and Community Facilities
- 3-45 Alternative SM and SQ Parks and Community Facilities
- 3-46 Alternative SN and SP Parks and Community Facilities
- 3-47 Alternative SO and SR Parks and Community Facilities
- 3-48 Alternative EA and EH Parks and Community Facilities
- 3-49 Alternative EB and EG Parks and Community Facilities
- 3-50 Alternative EC and EF Parks and Community Facilities
- 3-51 Alternative ED and EE Parks and Community Facilities
- 3-52 Cultural Resources in Project Area
- 3-53 Alternative NA and NE Cultural Resources
- 3-54 Alternative NB and ND Cultural Resources
- 3-55 Alternative NC Cultural Resources
- 3-56 Alternative SA and SL Cultural Resources
- 3-57 Alternative SB and SK Cultural Resources
- 3-58 Alternative SC and SJ Cultural Resources
- 3-59 Alternative SD and SI Cultural Resources
- 3-60 Alternative SE and SH Cultural Resources
- 3-61 Alternative SF and SG Cultural Resources
- 3-62 Alternative SM and SQ Cultural Resources
- 3-63 Alternative SN and SP Cultural Resources
- 3-64 Alternative SO and SR Cultural Resources
- 3-65 Alternative EA and EH Cultural Resources
- 3-66 Alternative EB and EG Cultural Resources
- 3-67 Alternative EC and EF Cultural Resources
- 3-68 Alternative ED and EE Cultural Resources
- 3-69 Floodplains and Waterbodies in Project Area
- 3-70 Alternative NA and NE Floodplains and Waterbodies
- 3-71 Alternative NB and ND Floodplains and Waterbodies
- 3-72 Alternative NC Floodplains and Waterbodies
- 3-73 Alternative SA and SL Floodplains and Waterbodies
- 3-74 Alternative SB and SK Floodplains and Waterbodies
- 3-75 Alternative SC and SJ Floodplains and Waterbodies
- 3-76 Alternative SD and SI Floodplains and Waterbodies

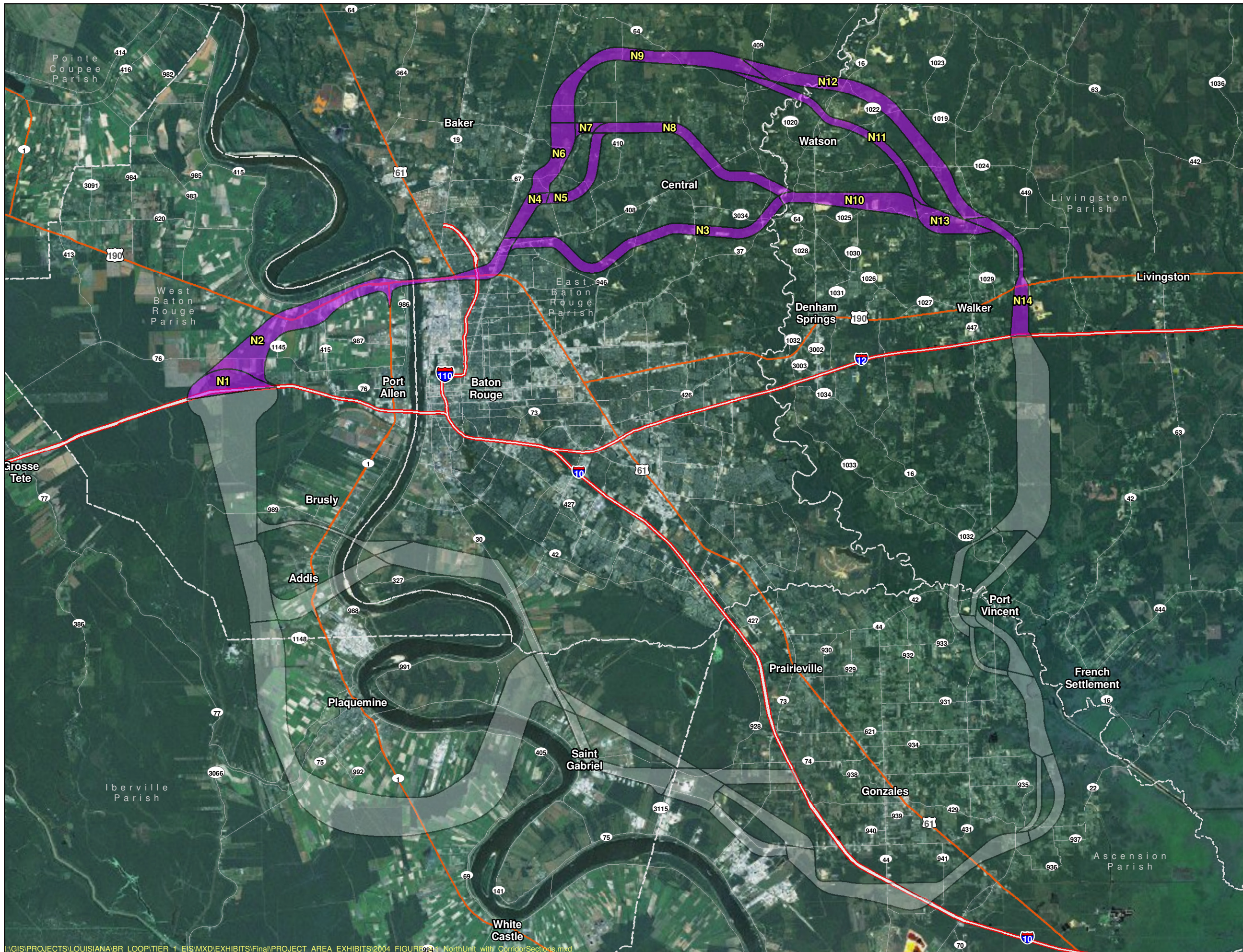


- 3-77 Alternative SE and SH Floodplains and Waterbodies
- 3-78 Alternative SF and SG Floodplains and Waterbodies
- 3-79 Alternative SM and SQ Floodplains and Waterbodies
- 3-80 Alternative SN and SP Floodplains and Waterbodies
- 3-81 Alternative SO and SR Floodplains and Waterbodies
- 3-82 Alternative EA and EH Floodplains and Waterbodies
- 3-83 Alternative EB and EG Floodplains and Waterbodies
- 3-84 Alternative EC and EF Floodplains and Waterbodies
- 3-85 Alternative ED and EE Floodplains and Waterbodies
- 3-86 Wetlands and Hydric Soils in Project Area
- 3-86A Wetlands by Type in Project Area
- 3-87 Alternative NA and NE Wetlands and Hydric Soils
- 3-88 Alternative NB and ND Wetlands and Hydric Soils
- 3-89 Alternative NC Wetlands and Hydric Soils
- 3-90 Alternative SA and SL Wetlands and Hydric Soils
- 3-91 Alternative SB and SK Wetlands and Hydric Soils
- 3-92 Alternative SC and SJ Wetlands and Hydric Soils
- 3-93 Alternative SD and SI Wetlands and Hydric Soils
- 3-94 Alternative SE and SH Wetlands and Hydric Soils
- 3-95 Alternative SF and SG Wetlands and Hydric Soils
- 3-96 Alternative SM and SQ Wetland and Hydric Soils
- 3-97 Alternative SN and SP Wetland and Hydric Soils
- 3-98 Alternative SO and SR Wetland and Hydric Soils
- 3-99 Alternative EA and EH Wetlands and Hydric Soils
- 3-100 Alternative EB and EG Wetlands and Hydric Soils
- 3-101 Alternative EC and EF Wetlands and Hydric Soils
- 3-102 Alternative ED and EE Wetlands and Hydric Soils
- 3-103 Waste Sites and Oil and Gas Wells in Project Area
- 3-104 Alternative NA and NE Waste Sites and Oil and Gas Wells
- 3-105 Alternative NB and ND Waste Sites and Oil and Gas Wells
- 3-106 Alternative NC Waste Sites and Oil and Gas Wells
- 3-107 Alternative SA and SL Waste Sites and Oil and Gas Wells
- 3-108 Alternative SB and SK Waste Sites and Oil and Gas Wells
- 3-109 Alternative SC and SJ Waste Sites and Oil and Gas Wells
- 3-110 Alternative SD and SI Waste Sites and Oil and Gas Wells
- 3-111 Alternative SE and SH Waste Sites and Oil and Gas Wells
- 3-112 Alternative SF and SG Waste Sites and Oil and Gas Wells
- 3-113 Alternative SM and SQ Waste Sites and Oil and Gas Wells
- 3-114 Alternative SN and SP Waste Sites and Oil and Gas Wells
- 3-115 Alternative SO and SR Waste Sites and Oil and Gas Wells
- 3-116 Alternative EA and EH Waste Sites and Oil and Gas Wells
- 3-117 Alternative EB and EG Waste Sites and Oil and Gas Wells
- 3-118 Alternative EC and EF Waste Sites and Oil and Gas Wells
- 3-119 Alternative ED and EE Waste Sites and Oil and Gas Wells
- 3-120 Census Block Group Poverty Population Percent, Year 2000
- 3-121 Census Block Minority Population Percent, Year 2000

3-122 Census Block Group Poverty Incomes Below DHH Income Level

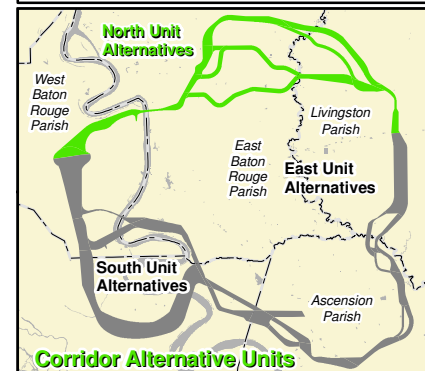
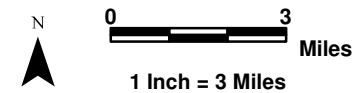
CHAPTER 4 EXHIBITS

- 4-1 Scotlandville Park - N2 and Hooper Road Park - N3
- 4-2 Cohn Preserve - N4, N5 and N6; James Watson Park - N5; and Cohn Arboretum - N6
- 4-3 Live Oak Ball Park - N12
- 4-4 Longwood Plantation - S3 and Woodstock Park - S3
- 4-5 East Iberville District Park - S5
- 4-6 Sunshine Park – S12
- 4-7 Ascension Civic Center - E1



**Baton Rouge Loop
Tier 1 Final EIS**

- Corridor Section Designation
- North Unit Sections
- Parishes
- Limited Access
- Highway
- Local Road



**Exhibit 2-1
North Unit
With
Corridor Sections**



Baton Rouge Loop Tier 1 Final EIS

- Corridor Section Designation
- South Unit Sections
- Parishes
- Limited Access
- Highway
- Local Road

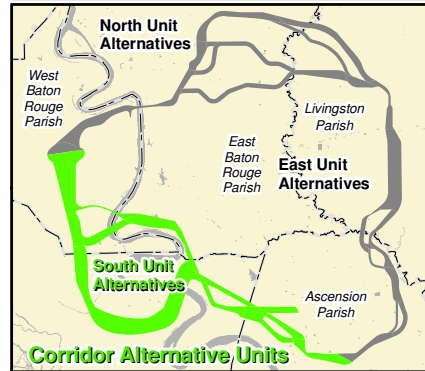
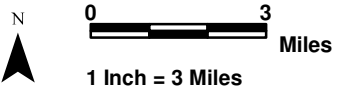
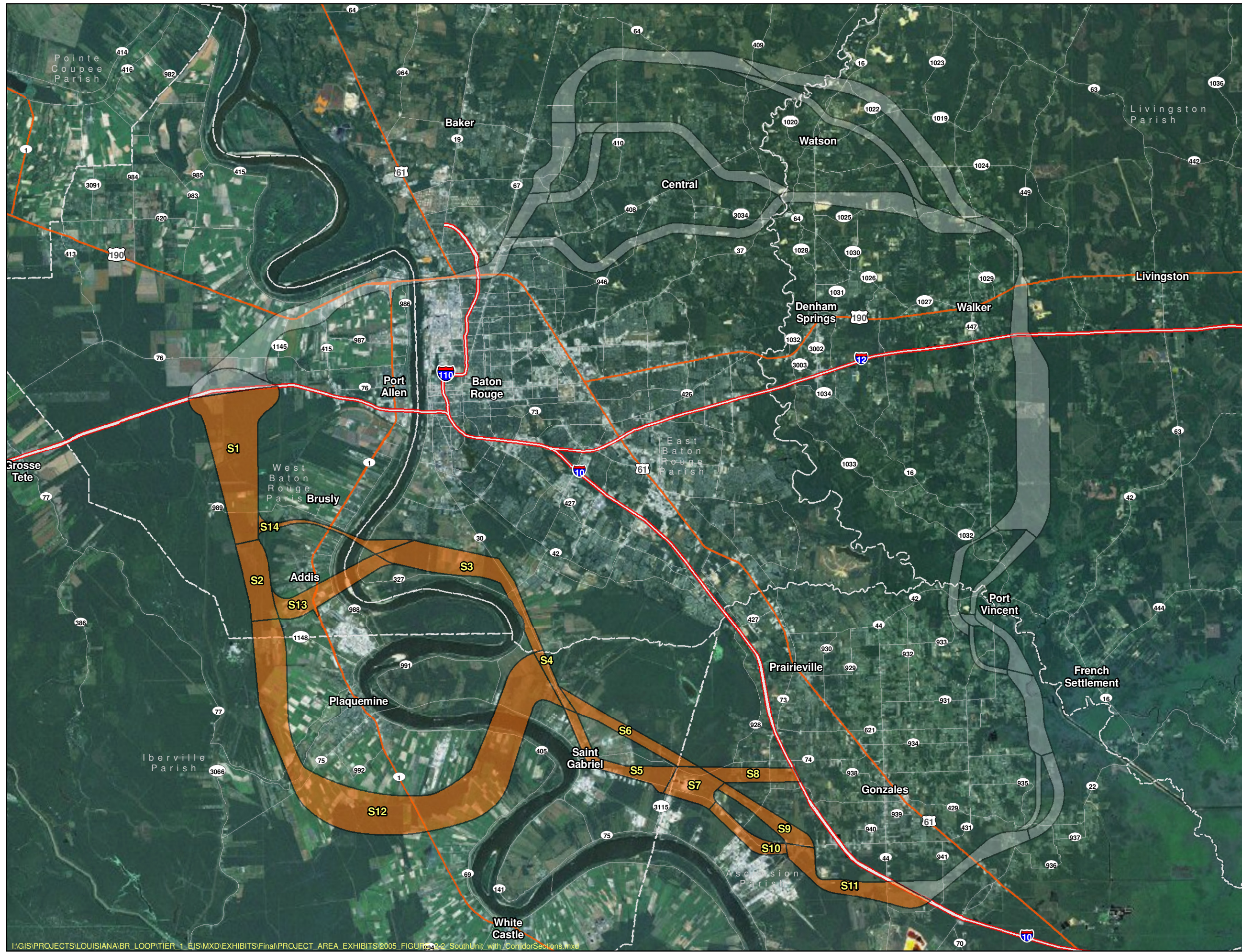
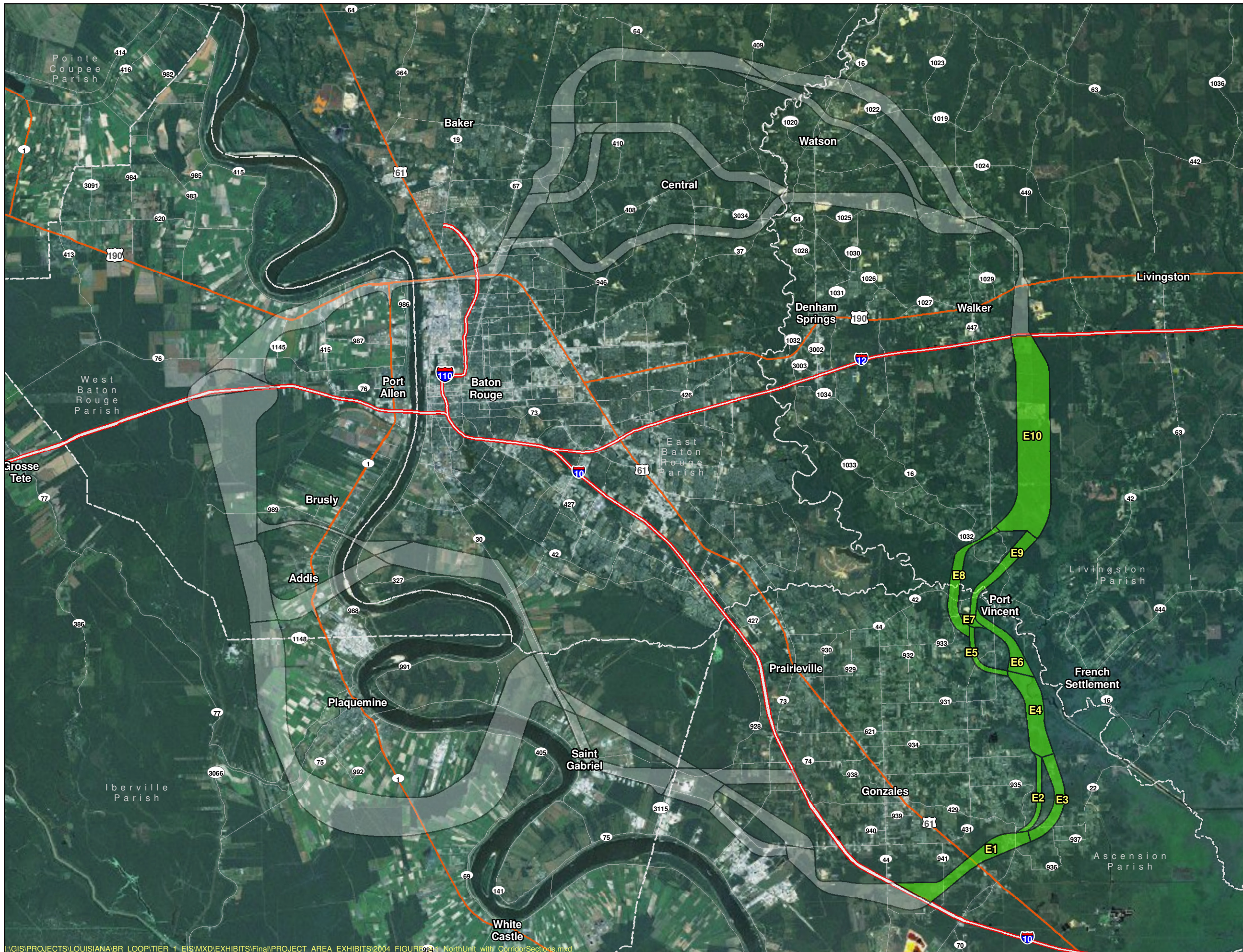








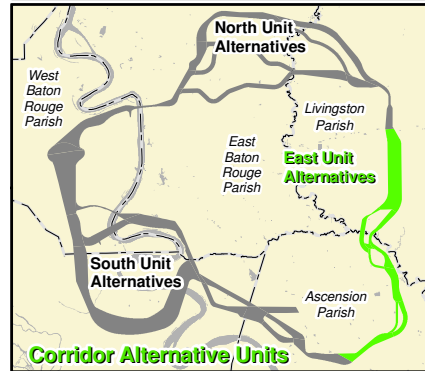
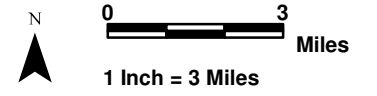
Exhibit 2-2
South Unit
With
Corridor Sections





**Baton Rouge Loop
Tier 1 Final EIS**

-  Corridor Section Designation
-  East Unit Sections
-  Parishes
-  Limited Access
-  Highway
-  Local Road



**Exhibit 2-3
East Unit
With
Corridor Sections**



Baton Rouge Loop Tier 1 Final EIS

- Limited Access
- Highway
- Major Road
- Future Traffic Volume Count Location
- Corridors
- Parish

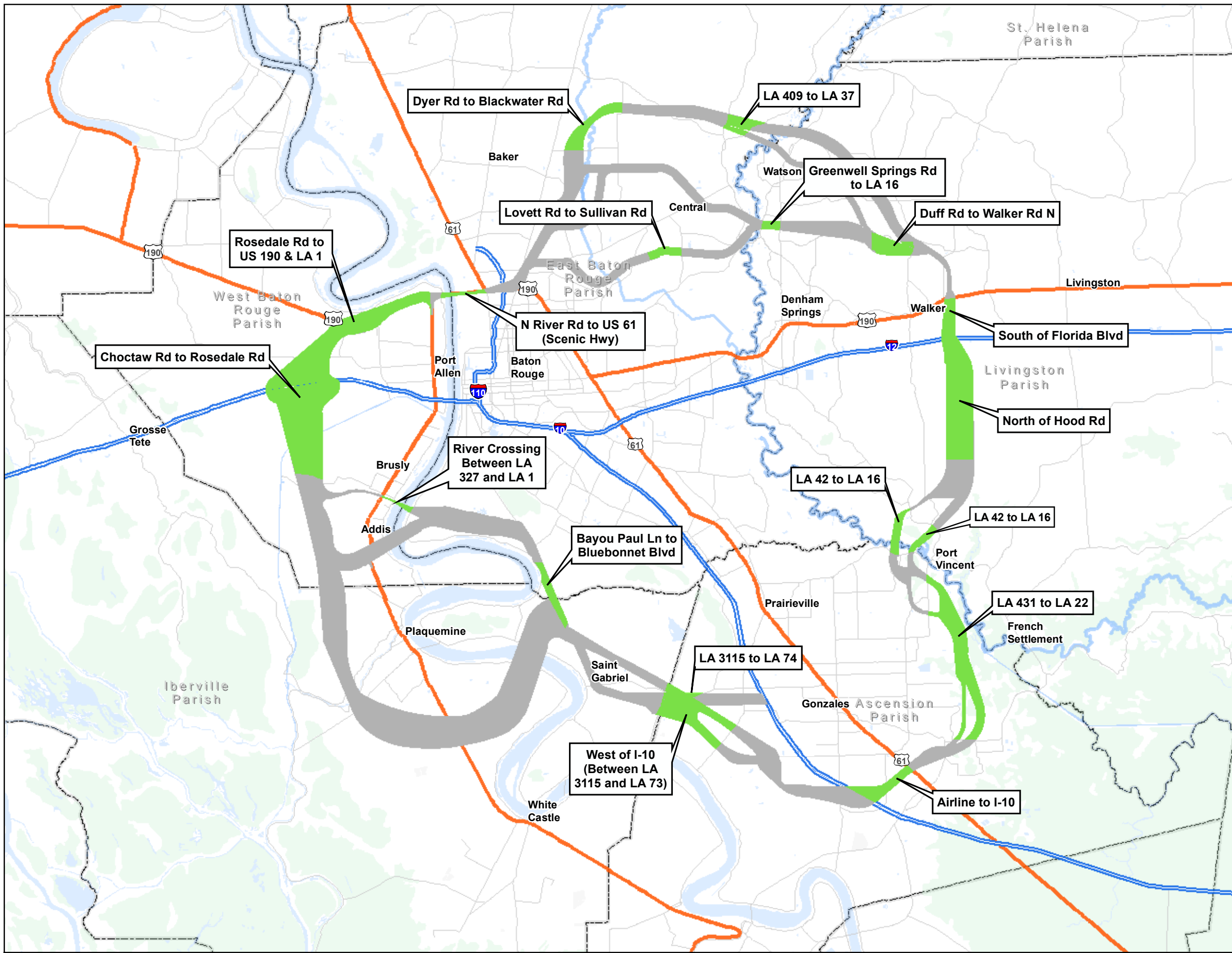
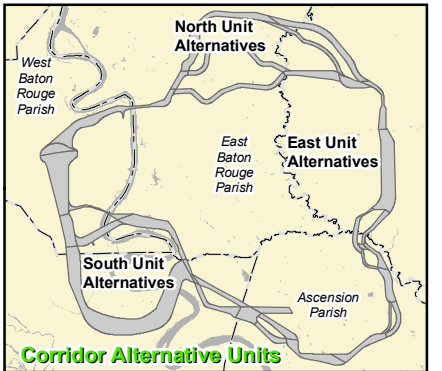
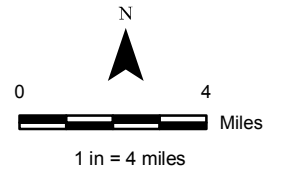
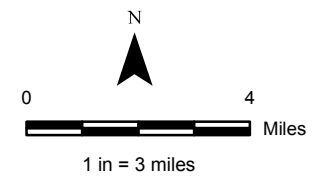


Exhibit 2-4
Future
Traffic
Volumes



Baton Rouge Loop Tier 1 Final EIS

- Limited Access
- Highway
- Major Road
- 2032 Traffic Volumes
- Corridors
- Parish



Note: Volumes are located in Table 2.41 of Volume 1.

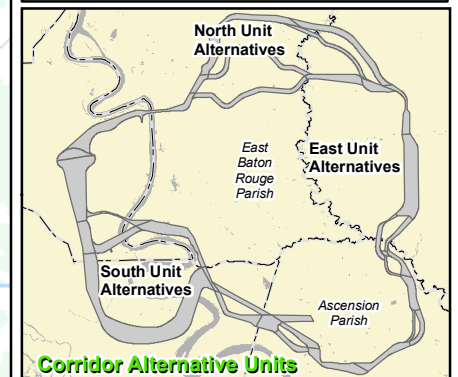


Exhibit 2-5 Future Interstate Traffic Volumes

